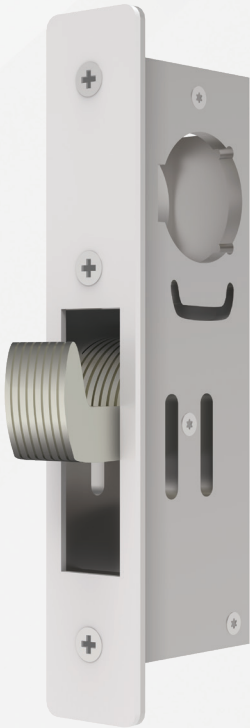


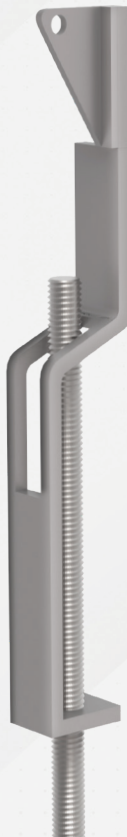
YKK AP

Commercial
Standard Entrance
Hardware



P-2101:
Hook Lock

H-3211:
Threshold
Bolt



P-2242:
Header
Bolt



Description

- Adams Rite® series Hookbolt Lock, Header and Threshold Bolts. Standard backset is 1-1/2" (medium & wide stile doors).
- Assembly accepts any standard 1-5/32" diameter mortised cylinder, thumbturn cylinder, or dummy cylinder. All operating cylinder types require MS cam.
- Considered maximum security for YKK AP standard and upgraded locking devices.

Compatible Entrances

35D/50D, 40M/50M & 35H/50H

YKK AP Part Numbers

P-2101: Hook Lock (1-1/2" backseat)

P-2242: Header Bolt

H-3211: Threshold Bolt

Material Composition

Aluminum, Stainless Steel and Mill Finish

Dimensions

Case: 1" x 6" x backset depth

Bolt: 5/8" x 1-3/8" with 13/16" throw

Faceplate: 1" x 6-7/8"

Hardware Vendor



ASSA ABLOY

Vendor Part or Series

Adams Rite® MS-1850 (Hook Lock 1-1/2" backset)

Adams Rite® 4016 (Header Bolt)

Adams Rite® 4015 (Threshold Bolt)

ProTek

Our ProTek® single 35H/50H entrance doors with non-emergency egress, employ a three point locking system to ensure they remain secured during the strong cyclical winds associated with hurricanes. The three point locking system features a single actuation system for ease of use, keyed exterior cylinder, and interior thumbturn.

P-2101 / P-2242 / H-3211

Standard Three-Point Locking System